

MPI-131

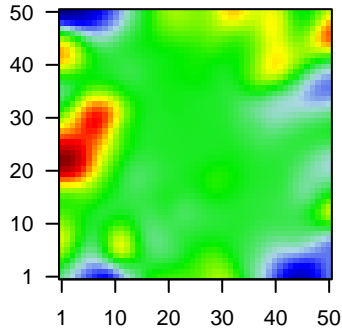
Global Summary

%DE = 0.03
 # genes with fdr < 0.2 = 374 (242 + / 132 -)
 # genes with fdr < 0.1 = 277 (176 + / 101 -)
 # genes with fdr < 0.05 = 195 (136 + / 59 -)
 # genes with fdr < 0.01 = 120 (83 + / 37 -)

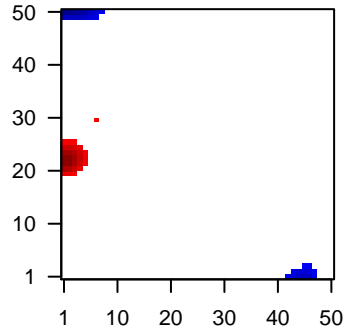
 # genes in genesets = 13152

<FC> = 0
 <t-score> = 0.11
 <p-value> = 0.29
 <fdr> = 0.97

Portrait



Regulated Metagenes



Global Genelist

Rank	ID	log(FC)	fdr p-value	Description
1	203247_s_at	-1.85	2e-16 5e-13	49 x 25 zinc finger protein 24 [Source:HGNC Symbol;Acc:HGNC:130]
2	207783_x_at	-0.87	2e-16 5e-13	45 x 28 tumor protein, translationally-controlled 1 [Source:HGNC Syr
3	209806_at	1.18	2e-16 5e-13	0 x 20
4	214290_s_at	1.4	2e-16 5e-13	0 x 21 histone cluster 2 H2A family member a3 [Source:HGNC Syml
5	214677_x_at	1.02	2e-16 5e-13	41 x 42 immunoglobulin lambda constant 2 [Source:HGNC Symbol;A
6	215121_x_at	0.95	2e-16 5e-13	41 x 42 immunoglobulin lambda constant 2 [Source:HGNC Symbol;A
7	215778_x_at	-2.04	2e-16 5e-13	44 x 0
8	216365_x_at	2.82	2e-16 5e-13	11 x 5
9	216853_x_at	3.13	2e-16 5e-13	11 x 5 immunoglobulin lambda variable 3-19 [Source:HGNC Symbc
10	218280_x_at	1.41	2e-16 5e-13	1 x 21 histone cluster 2 H2A family member a3 [Source:HGNC Syml
11	209398_at	1.74	7e-16 1e-11	0 x 20 histone cluster 1 H1 family member c [Source:HGNC Symbol
12	209138_x_at	0.84	1e-15 2e-10	41 x 42 immunoglobulin lambda constant 2 [Source:HGNC Symbol;A
13	208579_x_at	1.25	9e-15 2e-10	0 x 20 histone cluster 1 H2B family member k [Source:HGNC Symb
14	214836_x_at	-1.06	2e-14 7e-10	0 x 3
15	209374_s_at	0.91	5e-14 1e-08	0 x 22 immunoglobulin heavy constant mu [Source:HGNC Symbol;A
16	218186_at	1.96	5e-13 6e-08	0 x 17 RAB25, member RAS oncogene family [Source:HGNC Symb
17	206110_at	1.88	4e-12 6e-08	4 x 22 histone cluster 1 H3 family member h [Source:HGNC Symbol
18	221911_at	1.86	6e-12 2e-07	24 x 7 ETS variant 1 [Source:HGNC Symbol;Acc:HGNC:3490]
19	203786_s_at	1.82	2e-11 2e-07	19 x 16 tumor protein D52 like 1 [Source:HGNC Symbol;Acc:HGNC:1
20	209995_s_at	1.06	2e-11 2e-07	46 x 49 T cell leukemia/lymphoma 1A [Source:HGNC Symbol;Acc:HC

Global Geneset Analysis

Rank	GSZ	p-value	#all	Geneset
<i>Overexpressed</i>				
1	14.09	NULL	42	GSEA C2REACTOME_RNA_POL_I_PROMOTER_OPENING
2	13.61	NULL	70	CC nucleosome
3	12.34	NULL	36	GSEA C2REACTOME_PACKAGING_OF_TELOMERE_ENDS
4	12.18	NULL	8406	Chromatin state peripheral blood_2_TssAFlnk
5	12.04	NULL	46	GSEA C2REACTOME_DEPOSITION_OF_NEW_CENPA_CONTAINING_NU
6	11.61	NULL	62	GSEA C2REACTOME_MEIOTIC_RECOMBINATION
7	11.51	NULL	60	GSEA C2REACTOME_AMYLOIDS
8	11.11	NULL	62	GSEA C2REACTOME_RNA_POL_I_TRANSCRIPTION
9	10.64	NULL	8370	Chromatin state killer cells peripheral blood_2_TssAFlnk
10	10.54	NULL	92	GSEA C2KEGG_SYSTEMIC_LUPUS_ERYTHEMATOSUS
11	10.38	NULL	61	GSEA C2REACTOME_TELOMERE_MAINTENANCE
12	10.31	NULL	7833	Chromatin state peripheral blood_1_TssA
13	10.24	NULL	8322	Chromatin state naive cells peripheral blood_1_TssA
14	10.2	NULL	3564	TF ICGC_Taf1_targets
15	10.04	NULL	5620	Chromatin state Colon
16	9.54	NULL	8816	Chromatin state naive cells peripheral blood_2_TssAFlnk
17	9.52	NULL	7957	Chromatin state peripheral blood_2_TssAFlnk
18	9.46	NULL	8431	Chromatin state naive cells peripheral blood_2_TssAFlnk
19	9.45	NULL	8200	Chromatin state naive cells peripheral blood_2_TssAFlnk
20	9.38	NULL	9544	Chromatin state naive cells peripheral blood_2_TssAFlnk
<i>Underexpressed</i>				
1	-8.52	NULL	6368	Colon Cancer mucosa-position_kmeans_F_cecum colon_transverse co
2	-7.83	NULL	3734	Chromatin state peripheral blood_13_ReprPC
3	-7.39	NULL	63	GSEA C2ANASTASSIOU_CANCER_MESENCHYMAL_TRANSITION_SIGN
4	-7.11	NULL	3168	Lymphoid OPP_Repressed
5	-7.02	NULL	132	Colon Cancer CRC-cluster-a
6	-6.92	NULL	60	GSEA C2TURASHVILI_BREAST_LOBULAR_CARCINOMA_VS_LOBULAR
7	-6.87	NULL	2015	Chromatin state Colon
8	-6.86	NULL	2405	Chromatin state peripheral blood_13_ReprPC
9	-6.63	NULL	58	GSEA C2TURASHVILI_BREAST_LOBULAR_CARCINOMA_VS_DUCTAL_L
10	-6.47	NULL	335	GSEA C2SCHUETZ_BREAST_CANCER_DUCTAL_INVASIVE_UP
11	-6.34	NULL	3918	Chromatin state peripheral blood_14_ReprPCWk
12	-6.24	NULL	1744	Chromatin state Wk_Colon
13	-5.99	NULL	136	Reference dataset 2.9_Cytoskeleton
14	-5.99	NULL	3001	Chromatin state peripheral blood_14_ReprPCWk
15	-5.77	NULL	2602	Chromatin state killer cells peripheral blood_12_EnhBiv
16	-5.73	NULL	2984	Chromatin state killer cells peripheral blood_14_ReprPCWk
17	-5.5	NULL	1984	Chromatin state ReprPC_Melanocytes
18	-5.34	NULL	2765	Chromatin state stromal cells peripheral blood_13_ReprPC
19	-5.31	NULL	2417	Chromatin state ReprPCWk_Melanocytes
20	-5.3	NULL	1813	Chromatin state Fibroblasts

p-values

